

Better Intelligence
Better Decisions
Better Health

Session 2: International and national developments in health intelligence

Taking forward health intelligence in Northern Ireland



Public health review knowledge management working group

Aims

- To clarify the concept of knowledge management in relation to public health
- To review developments in management of public health knowledge
- To undertake a limited NI knowledge audit of sources, funding & availability
- To review the key elements a public health information system needs to provide

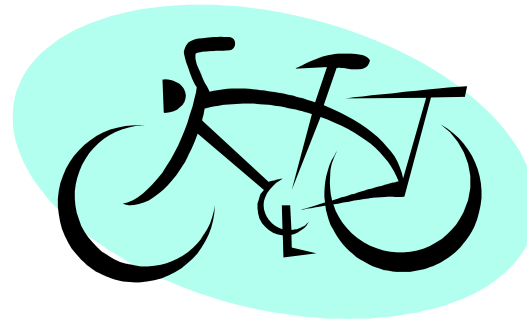
Interim report provided to CMO, January 2006

Knowledge management core concepts

- Explicit Knowledge
 - Can be written down
 - Can be computerised
- *“Know that”*



- Tacit Knowledge
 - Skills & experience
 - Insights & intuition
- *“Know how”*



Knowledge management for effective public health practice

Explicit

- Improve access to sources of information
- Increase awareness & use of sources
- Make tacit knowledge explicit where possible

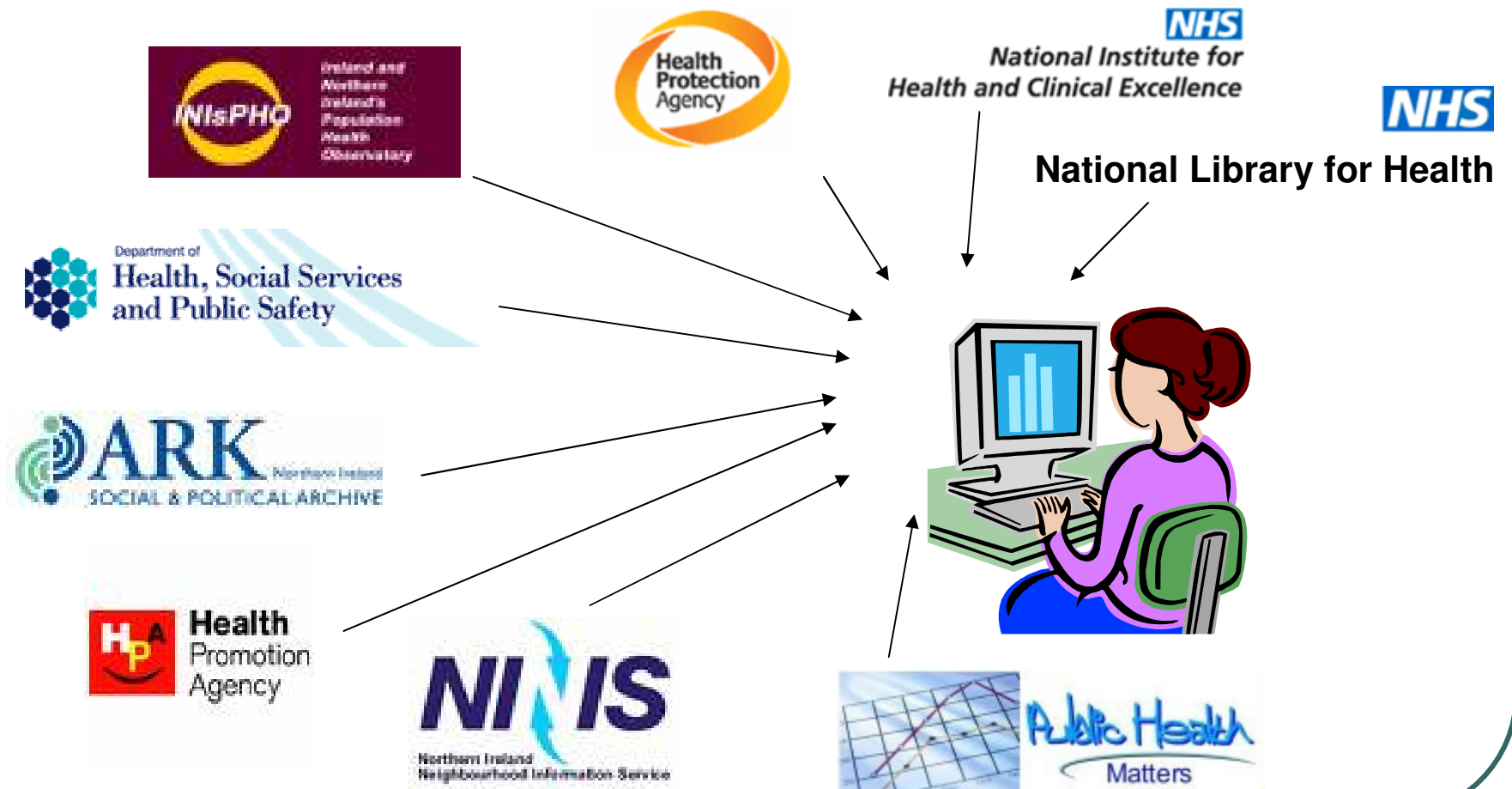
But a focus only on improving information access is not likely to succeed!

Tacit

- Identify “Who Knows What”
 - *Corporate yellow pages*
- Establish “*Communities of Practice*”

“Groups of people who share a concern, a set of problems, or a passion about a topic and who deepen their knowledge and expertise by interacting on an ongoing basis” (Snyder et al 2004)

Making public health information more accessible in Northern Ireland



NINIS | Neighbourhood Statistics for NI - Microsoft Internet Explorer provided by DFP

File Edit View Favorites Tools Help

Address http://www.ninis.nisra.gov.uk/

NINIS Northern Ireland Neighbourhood Information Service (NINIS)

Welcome to The Northern Ireland Neighbourhood Information Service (NINIS)

NINIS provides free access to statistical and locational information relating to small areas across Northern Ireland. Information is available across a range of themes including Population, Social and Welfare, Agriculture, Education and Crime. Users will be able to obtain an area profile based on a postcode or by selecting an area to view.

Statistics for your Neighbourhood

To view statistics on your local area please enter full postcode e.g. 'BT01 4AB':

 © NISRA

FREE Seminars

[Click here](#)

NINIS

To access all local statistics click on the NINIS button to the left or enter a postcode in the box above. The information ranges from the 2001 Census to social security, health, education and other high quality statistical data.

Deprivation 2005

[Click here for information on the new Northern Ireland Multiple Deprivation Measure 2005.](#)

Towns and Villages

[Click here for information on Towns and Villages. Information is based on key statistics from the 2001 Census for towns and villages with population size greater than 500.](#)

Neighbourhood Renewal

[Click here for information on Neighbourhood Renewal - Department for Social Development Urban Regeneration areas.](#)

Latest News

16-08-06

Bankruptcy and actions for mortgage possession data available on Ninis.

To help protect your security, Internet Explorer has restricted this file from showing active content that could access your computer. [Click here for options](#)

Start C:\WINDOWS\system32... New Memo - Lotus Notes Document1 - Microsoft ... NINIS | Neighbourhoo... 15:17



NINIS Investing for Health



The Investing for Health strategy aims to improve the health of all our people and to reduce health inequalities. The strategy set a number of targets through which performance could be measured. Belfast Healthy Cities, on behalf of the Eastern Health and Social Services Board (EHSSB) have outlined 109 indicators necessary to develop the monitoring required for the IFH strategy. This website provides information on these indicators.

Area Profile

If you require a general profile of an area then click the **Area Profile** button (left) to select the area. Alternatively enter a postcode in the Area Profile Quick Access (right).

Data Catalogue

To view a list of the statistical data available for Investing for Health click the **Data Catalogue** button (left).

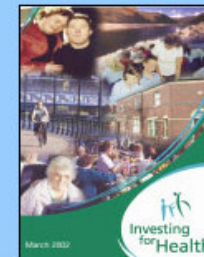
Map Catalogue

To view maps for all geographical areas click the **Map Catalogue** button (left).

Statistics for your Neighbourhood

To view statistics on your local area please enter full postcode e.g. 'BT1 4AB':

Quick Links



NINIS IFH | Area Profile Report - Microsoft Internet Explorer provided by DFP

File Edit View Favorites Tools Help

Address http://ninis01/mapxtreme_ifh/report.asp?INIT=YES&POSTCODE=BT086ZF&DESC=FromGeneral&CurrentLevel=COA&ID=95II150004&Name=95II150004&Override=WARD&Overri Go

Area Profile Postcode: BT08 6ZF Postcode: Search [click here for printer friendly version](#)

[Northern Ireland](#)
 [Health & Social Services Board](#)
 [Parliamentary Constituency](#)
 [Local Government District](#)
 [Electoral Ward](#)
 [Super Output Area](#)
 [Output Area](#)

Ward Information for Knockbracken ward 95II15 **Crown Copyright 2006**

This page provides information on **Knockbracken** ward, click on the blue tabs at the top to see results for other geographical levels. Click on the map to the right to see a more detailed map of **Knockbracken** ward.

Click on these titles below to obtain an area profile for that subject. The area profiles use Census 2001 and other administrative sources; the datasets used are shown below each section.

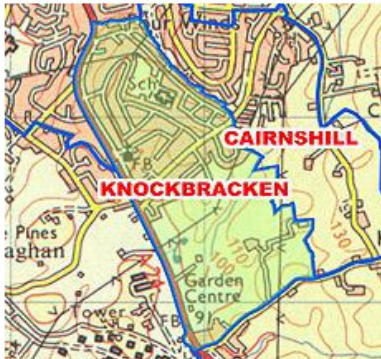
- **Goal 1 - Longer Healthier Lives**
- **Goal 2 - Reducing Inequalities**
- **Objective 1 - Poverty**
- **Objective 2 - Education & Skills**
- **Objective 3 - Mental Health & Emotional Well Being**
- **Objective 4 - Healthy Environments**
- **Objective 5 - Neighbourhood Renewal**
- **Objective 6 - Accidental Injury**
- **Objective 7 - Healthier Choices**

Goal 1 - Longer Healthier Lives

To improve the health of our people by increasing the length of their lives and increasing the number of years they spend free from disease, illness and disability.

The average life expectancy (2001-2003) for men in **Knockbracken** ward is Urban and for women Eastern.

Potential Years of Life Lost (PYLL) is an indicator of premature mortality. It represents the total number of years NOT lived by an individual who died before age 75. For example someone who dies at age 25, has lost 50 years of life. In **Knockbracken** ward, using 2002-2004 average, 21.6 Potential Years of Life were Lost per year and 17.0 Potential Years of Life Lost per 100 persons.



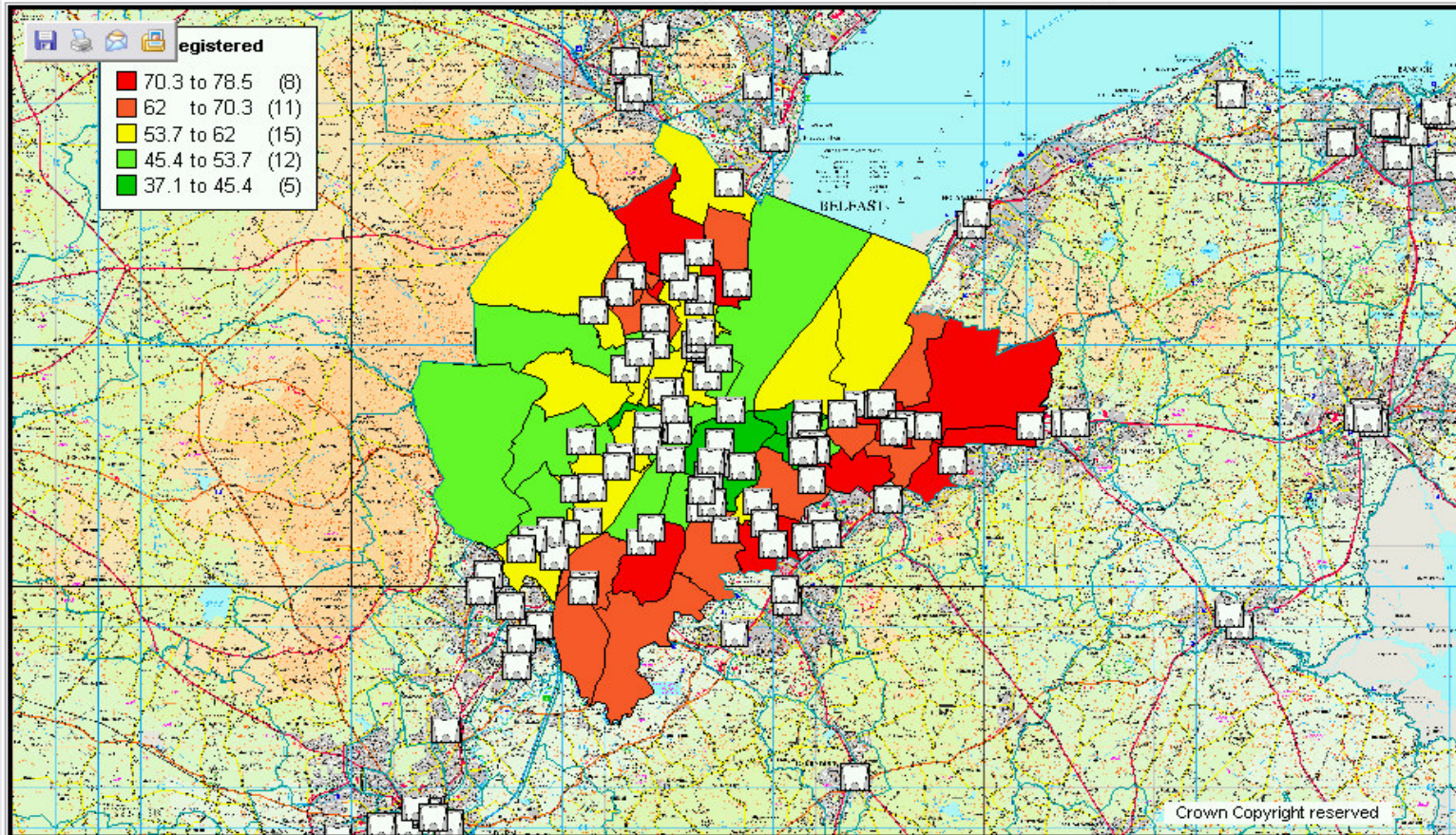
[Click here for full-sized map](#)

Comparisons	WARD	LGD	HSSB	N.IRELAND
Life Expectancy Men (2001-2003)	Knockbracken	Castlereagh	[x]	N.I
	66	67.2	66.6	66.7

Local intranet

start New Memo - Lotus No... NINIS | Neighbourho... NINIS IFH | Area Prof... Microsoft PowerPoint ... 17:38

Percentage of children aged 3-5 registered with a dentist (Belfast LGD) 2005



Crown Copyright reserved

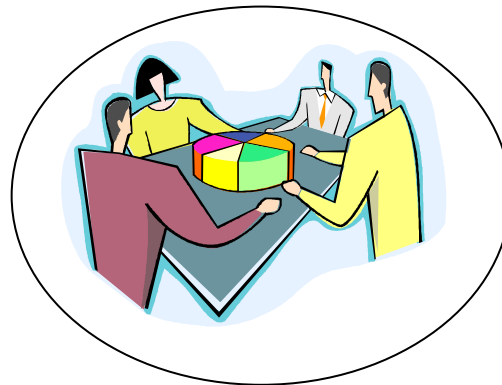
Based upon the Ordnance Survey Northern Ireland/Census Office Northern Ireland Map. Maps have been reproduced with the permission of the Chief Executive of OSNI/NISRA, © Crown Copyright 2003



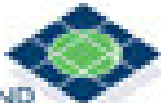
Building Communities of Practice



Southern



NORTHERN IRELAND
HEALTH PROMOTING HOSPITALS



REGIONAL NETWORK



Health Promoting Hospitals All Ireland

Wellnet Communities of Interest



Public health knowledge management Recommended next steps for NI

- Develop a strong focus for public health knowledge management within the new *Health and Social Services Authority*
- Identify a lead *KM Champion* for Public Health
- Strengthen links with *National Library for Health* and *Public Health Observatories*
- Build strong *Communities of Practice* involving academic and service public health
- Establish a *Public Health Yellow Pages* possibly on an All-Ireland basis
- Increase awareness and skills in using local, national and international sources of explicit knowledge