


'Making Diabetes Count' - Response from General Practice Perspective

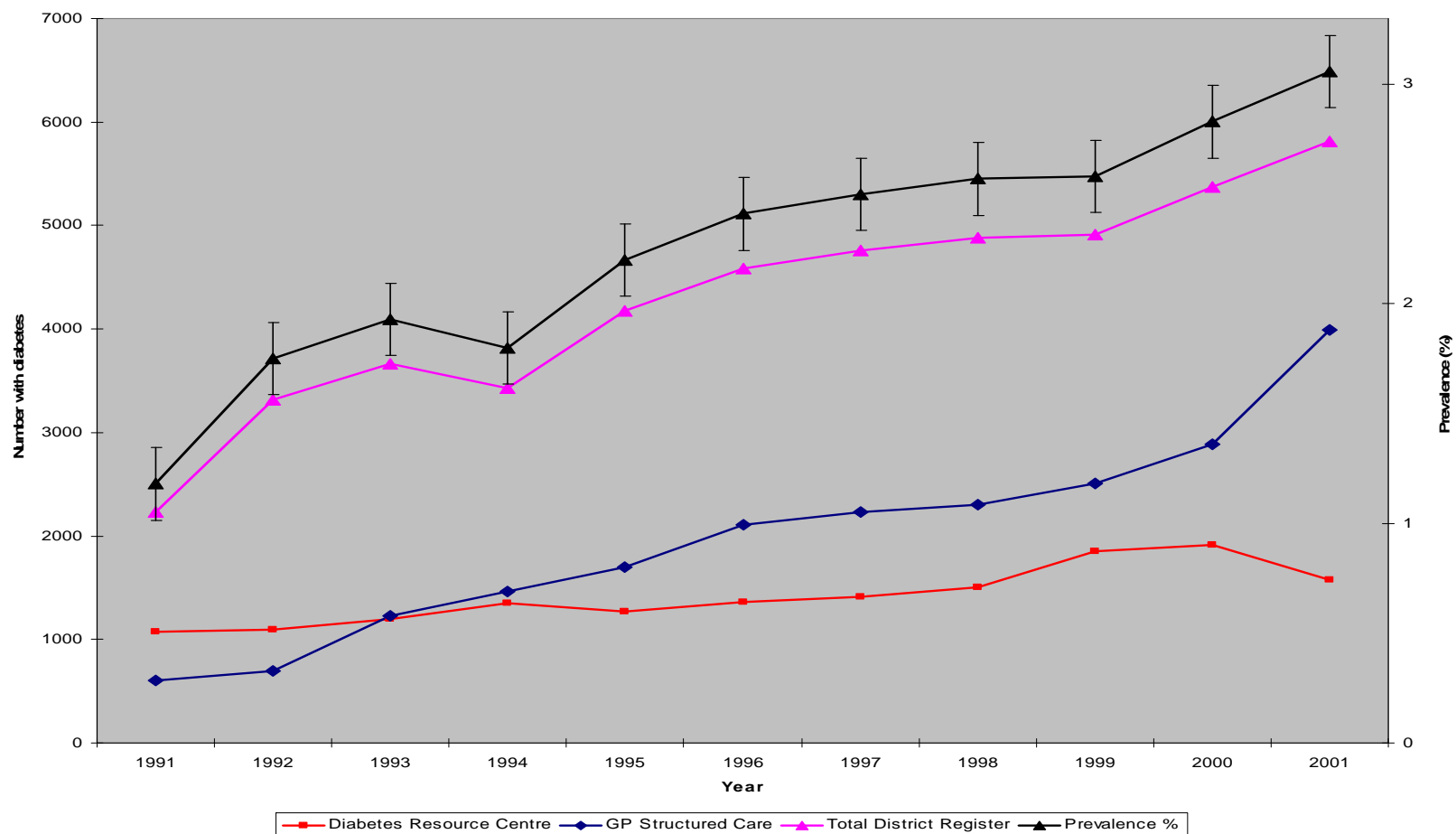
Dr David L Whitford
GP and Associate Professor in
General Practice, RCSI, Dublin.

- 
- Known increasing prevalence of diabetes worldwide related to increasing age of population and increasing obesity related to diet and lack of physical activity

Why are accurate estimates of the population prevalence of diabetes important to general practitioners?

Numbers, crude prevalence and site of care of patients with diabetes in North Tyneside 1991-2001

District Diabetes Population 1991-2001



Numbers of patients with diabetes, site of care and prevalence of diabetes in the North Tyneside

District Diabetes Service 1991-2001

	Numbers of patients at end point of each year										
Type of care:	1991	1992	1993	1994	1995	1996	1997	1998	1999	2000	2001
GP Structured Care	608	700	1230	1465	1700	2108	2232	2300	2508	2884	3995
GP unstructured care	120	*	*	162	*	*	*	*	*	149	102
Hospitals	1508	1456	1560	1799	1643	1740	1801	1890	2252	2338	1712
Proportion attending primary care (%)	27.2	21.1	33.6	42.8	37.1	46.0	45.7	47.1	51.1	53.7	68.8
Total District Diabetic Population	2236	3319	3660	3426	4173	4582	4756	4883	4908	5371	5809
District prevalence (%)	1.14	1.70	1.88	1.77	2.15	2.37	2.46	2.52	2.54	2.77	2.99
95% confidence intervals (%)	1.10-1.19	1.64-1.76	1.82-1.94	1.71-1.82	2.09-2.22	2.30-2.43	2.39-2.53	2.45-2.59	2.47-2.61	2.69-2.84	2.92-3.07



Main points

- Marked rise in prevalence of known diabetes
- Uncertain how this relates to population prevalence of diabetes
- Absolute increase in numbers mainly looked after in primary care
- Increased complexity in hospitals



Importance of accurate population prevalence

- Early diagnosis
- Comprehensive quality care
- Addressing inequities in care
- Health services planning
- Registers – practice/local/national?
- Monitor performance



Conclusion

- Accurate population estimates important for development of diabetes care in general practice
- General practices would benefit from practice based population estimates
- Systems to improve early detection and provide comprehensive quality diabetes care need to be developed alongside