

Helsingborg situated on the westcoast in the very south of Sweden 10 minutes by boat to Denmark



Inhabitants: 123.389 Foreign born 17% (compared to Swedens 13%)

0-15 years old 18%

16-19 years old 5 %

65> 18 %

Embedded

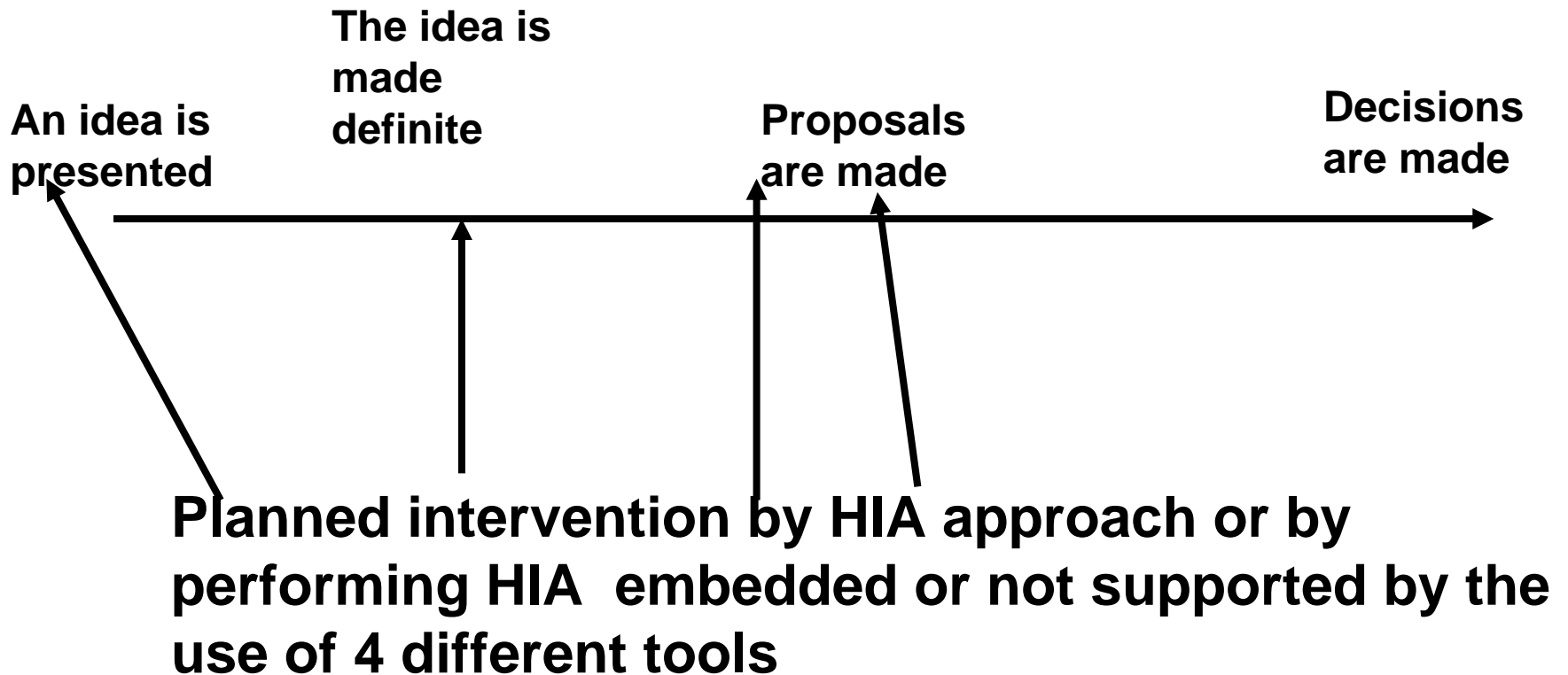


or not

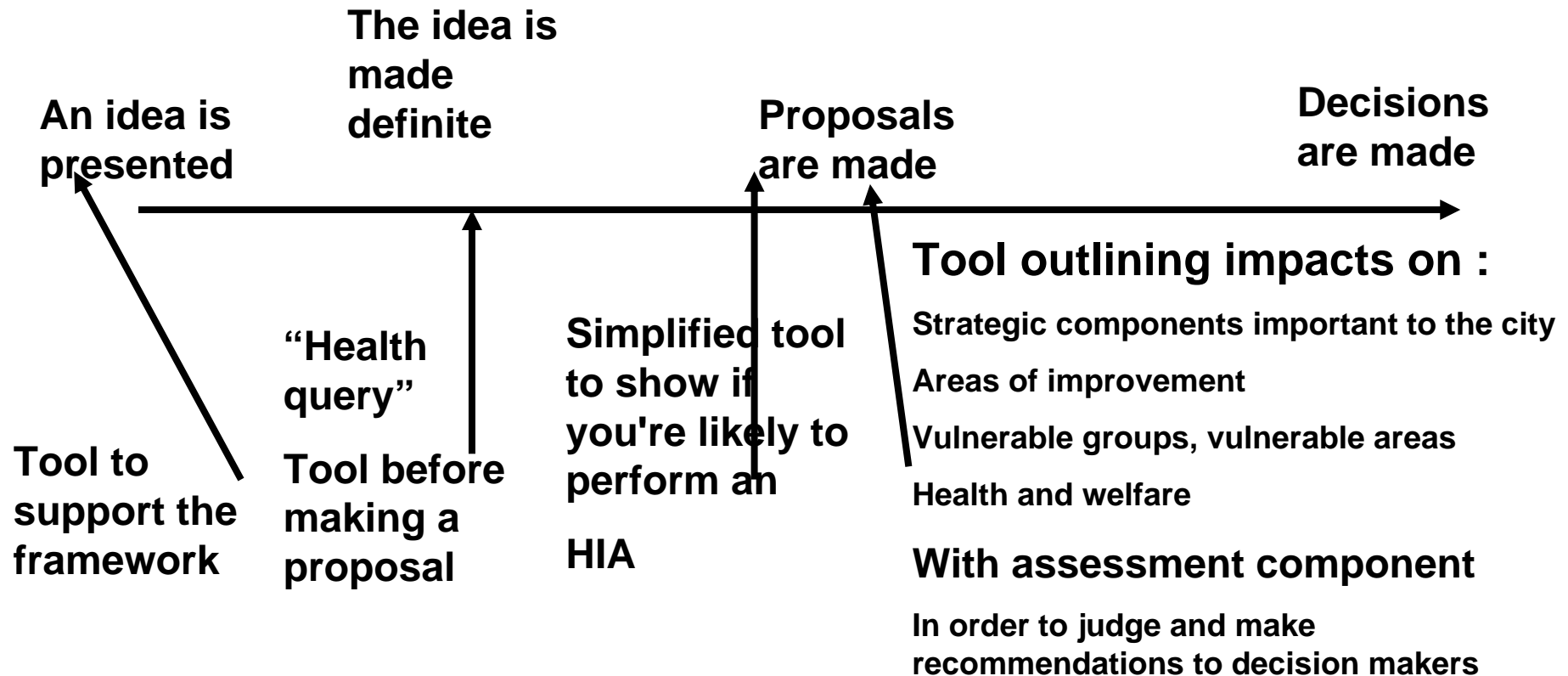


How the question became the answer

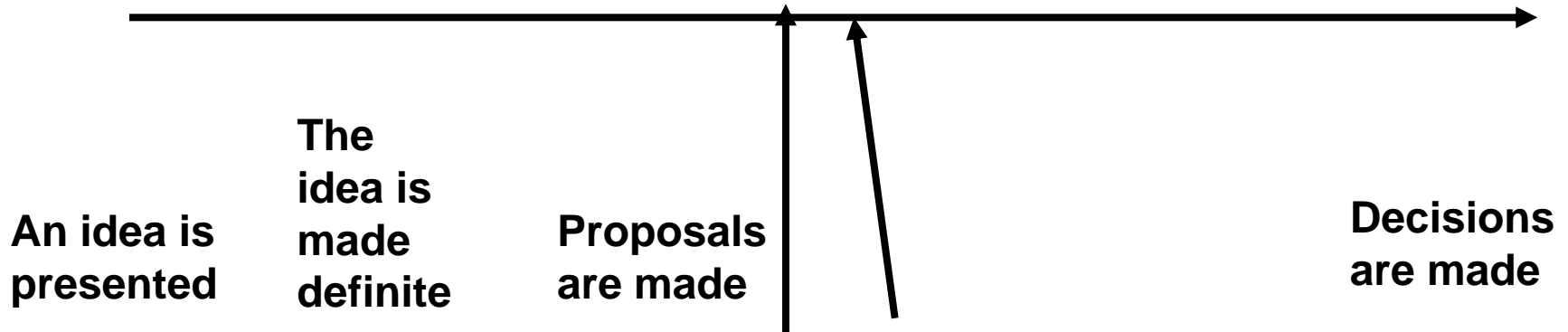
The decision-making process



The decision making process and interventions with HIA tools



Change of plans to:



And still: the best of prerequisites

- Support of politicians
- Cross-sectional commitment
- Annual comprehensive plan of sustainable development
- Growing knowledge of areas of improvement



Embedded or not embedded

**Crucial points explaining impacts on the outcome
of our HIA :s**

•**Stage in decision making process**

- Designing proposal
- Proposal ready

•**Values at stake**

- Strong political conviction or otherwise
- Neutral

•**Culture of decision making**

- Cross sectional

•**Cordial values in the organisations assessed**

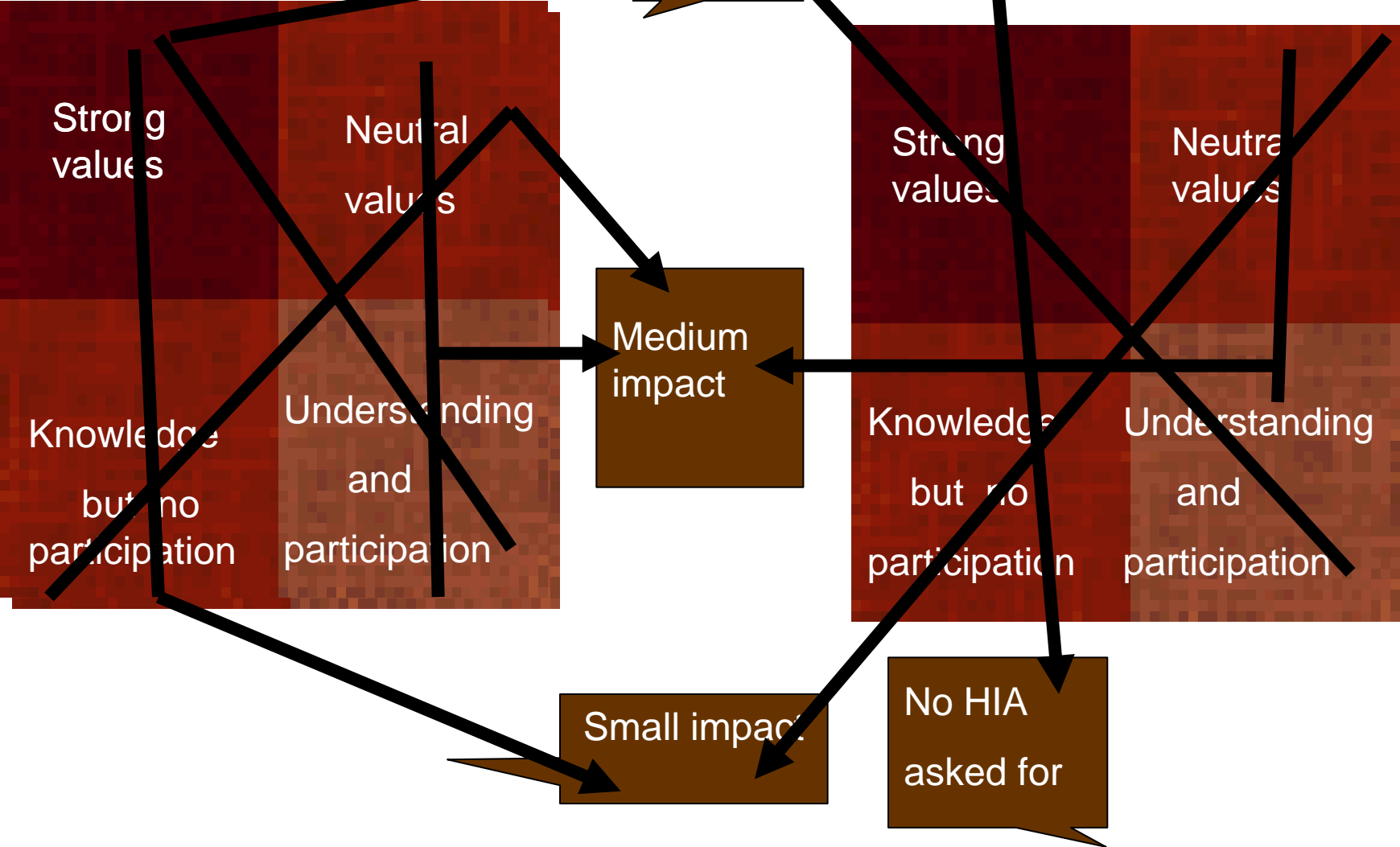
Minimizing gaps in health, welfare and possibilities for sustainable development

•**Nature of the participation of the decision makers**

- The decision makers have knowledge but little participation
- The decision makers participates in different ways and have an understanding of the process, the transparency it brings and possible outcomes.

Early stage designing proposal. Embedded more likely to be an option.

Late stage proposal created More likely to choose not embedded



Highest impact seems to be strong values and profound understanding of and participation in the HIA process of the decision makers. Embedded or not embedded.

Most objective? Not embedded if profound understanding and participation is at hand.



So: question becomes answer

The question and main challenge seems to be:

Values at stake and above all the profundity

**of the understanding and the participation of the
decision makers.**